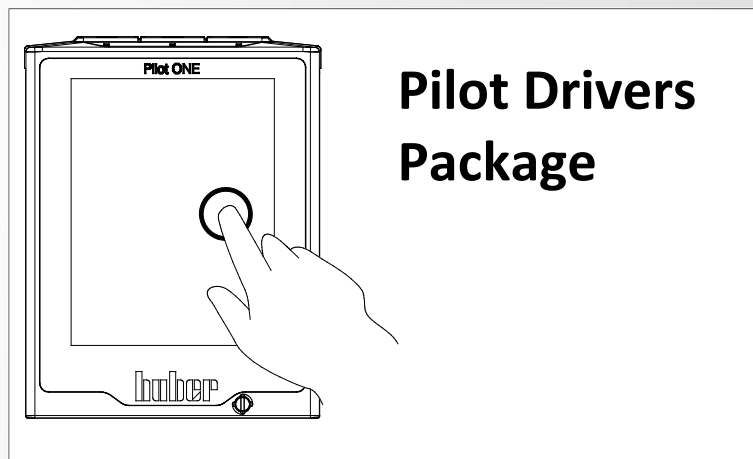




Inspired by temperature



**Pilot Drivers
Package**

Operation Manual

huber

Pilot Drivers Package

Table of contents

1	Common	6
1.1	Installation.....	6
1.2	De-installation	6
2	Available drivers	6
2.1	Pilot ONE USB CDC	6
2.1.1	Field of application.....	6
2.1.2	Connection.....	6
2.1.3	Activate USB driver	7
2.1.4	Determine COM Port	7
2.1.5	Major Problems.....	8
2.1.5.1	<i>The installation of the driver fails under windows 8.....</i>	<i>8</i>
2.1.5.2	<i>Post driver installation problems.....</i>	<i>9</i>

1 Common

INFORMATION

Windows can use the Pilot ONE as a device, if a needed driver is known. The installation package 'Pilot Drivers Package' contains these Windows drivers which can be used for different applications and functions for the Pilot ONE.

1.1 Installation

Use the installation program "install_Pilot_Drivers_Package". If an older version of the Pilot Drivers Package is already installed, this version has to be uninstalled first. If the version equals the current version it is possible to add new drivers from the container.

INFORMATION

Be sure that the Pilot ONE is not connected to your PC during driver installation. To install a driver on a Windows PC you need administrator privileges.

1.2 De-installation

With the "Uninstaller.exe" you can remove installed drivers. Therefore, select the driver you want to uninstall from the component view. Be sure that the Pilot ONE is not connected to your PC while you de-install drivers.

2 Available drivers

2.1 Pilot ONE USB CDC

INFORMATION

The Pilot ONE USB CDC driver is not needed anymore under Windows 10, or newer.

2.1.1 Field of application

For data communication with Spy Software, Labview or other control systems you can use „Pilot ONE USB CDC“ driver. This driver uses the USB connection like an RS232 (serial) connection. This means that the USB port is changed to a virtual serial port.

2.1.2 Connection

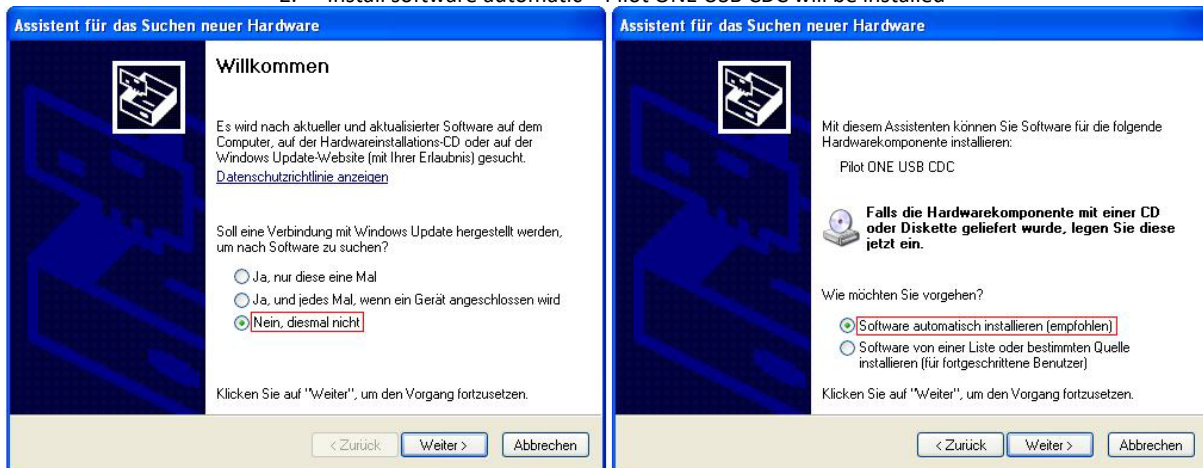
With a USB connection cable, the Pilot ONE can be connected to your PC. The following picture shows the connectors for the Pilot ONE. For data communication, the Pilot ONE is used as a slave device. In this case, use the miniUSB port (first from left).



2.1.3 Activate USB driver

If you use the connection on a USB port for the first time after installation, the assistant for installing software will detect the new hardware. Use the following settings within the assistant:

1. No connection to Windows Updates
2. Install software automatic – Pilot ONE USB CDC will be installed

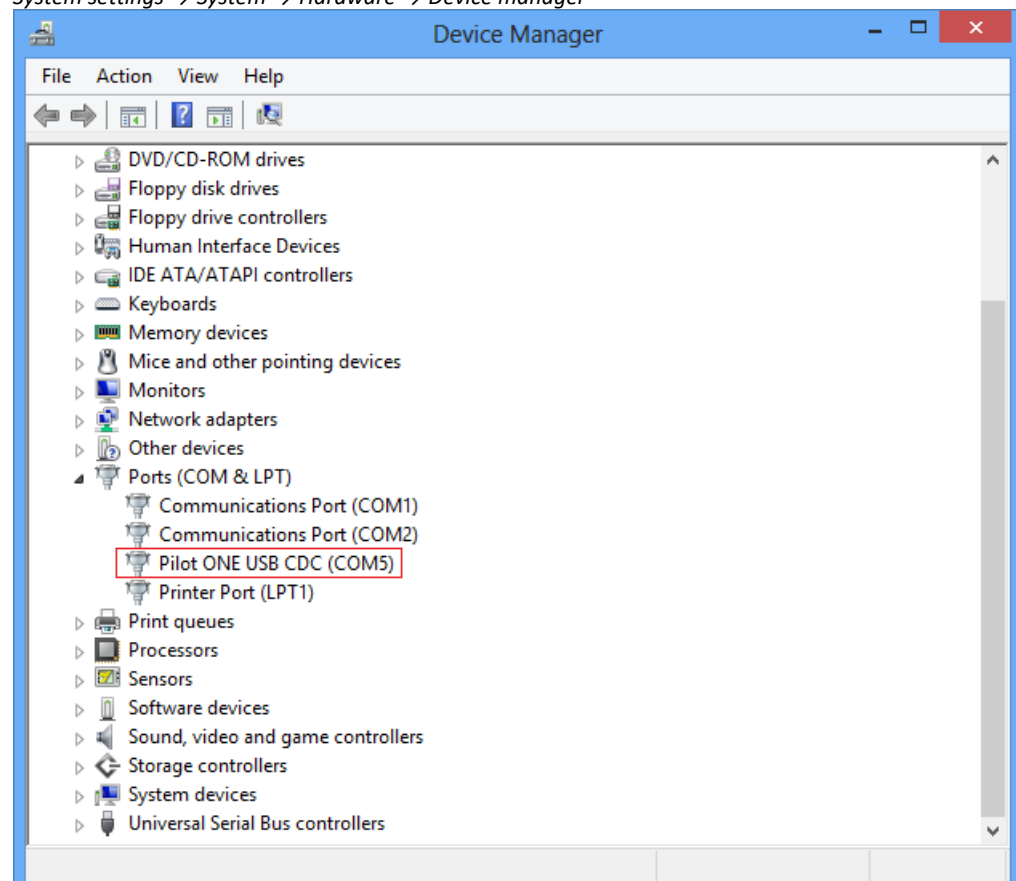


After the driver installation, a message will pop up that the driver is installed successfully and can be used. It is recommended to always use the same USB port.

2.1.4 Determine COM Port

To determine which COM port is used for the Pilot ONE, open the windows device manager. The displayed COM port can be used in an application as the RS232 connection.

System settings → System → Hardware → Device manager



After a successful driver installation and activation, Pilot ONE USB CDC will be shown in the menu "(COM and LTP)". You can change the COM number within the settings of the driver. If Spy Software is used, the COM number has to be between COM1...20.

INFORMATION

If Spy Software is used, the COM number has to be between COM1...20.

2.1.5 Major Problems

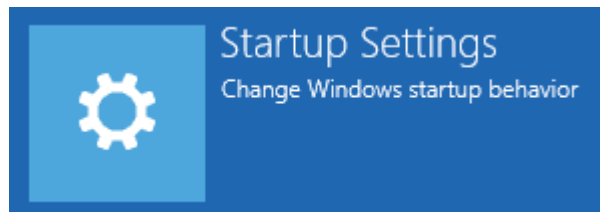
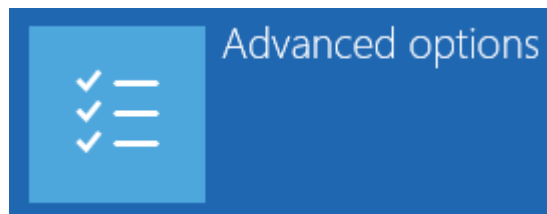
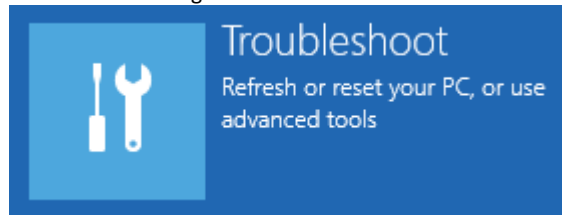
2.1.5.1 The installation of the driver fails under windows 8

Cause: Driver signature enforcement is enabled
Follow these steps to disable driver signature enforcement:

- Press the Power-Button in the pc settings (right lower corner) and select Restart while holding down shift.



- Select the following menu items:



- The system restarts. Choose the menu item 7.

7) Disable driver signature enforcement

- Log in to the system and install the driver as described above.

2.1.5.2 Post driver installation problems

If errors occurred while installation and the connection does not work properly, check the driver in the device manager and maybe reinstall the driver. You can also use the device manager to update the driver manually.

Inspired by **temperature** designed for you

Peter Huber Kältemaschinenbau SE
Werner-von-Siemens-Str. 1
77656 Offenburg / Germany

Telefon +49 (0)781 9603-0
Telefax +49 (0)781 57211

info@huber-online.com
www.huber-online.com

Technischer Service: +49 (0)781 9603-244

-125 °C ... +425 °C

huber